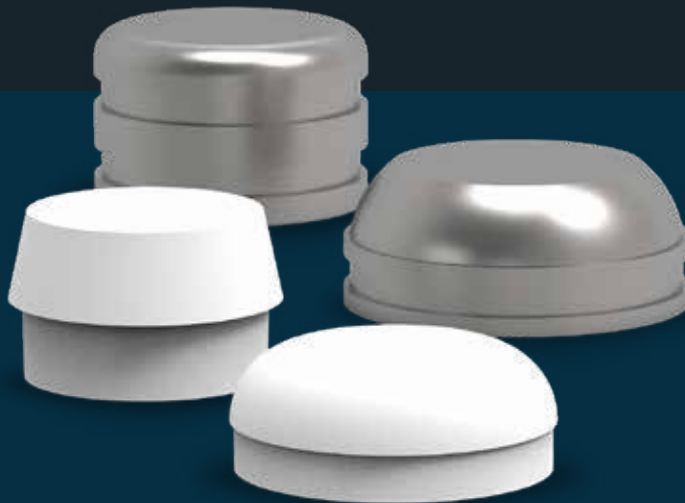
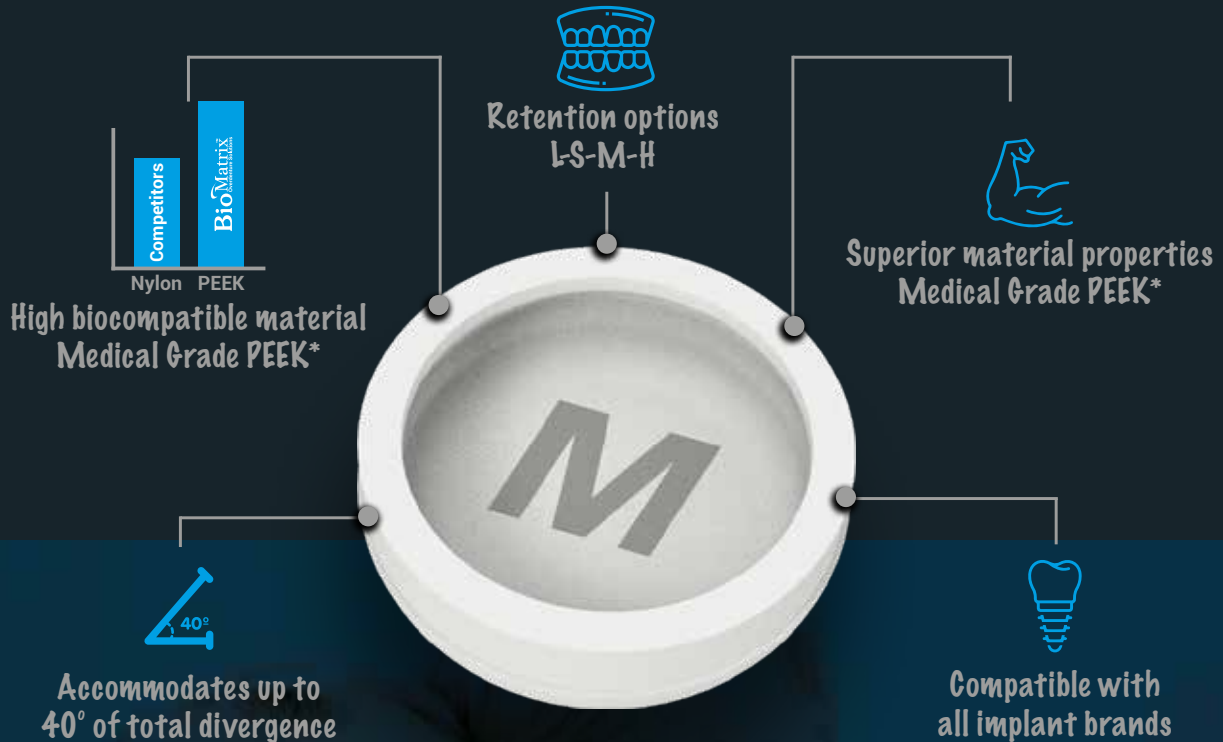


BioMatrix™
Overdenture Solutions

PEEK ATTACHMENTS



ISO ISO CE
9001:2015 13485:2016 1984



OVERDENTURE SOLUTIONS WITH PEEK INSERTS



<http://ifu.avrupaimplants.com/en>

BioLoc™ PEEK Attachments

BioLoc Set

Includes; Metal housing (with L BioLoc PEEK insert),
Protective disc, S-M-H BioLoc PEEK inserts



Product Code: BLSET

Medical Grade PEEK
Compatible with Locator* Abutments of all implant brands.

BioLoc PEEK Insert,
For Lab processing and
chair-side denture pick-up



Product Code: BLL4

4 per package

BioLoc PEEK Insert, Medium Retention,
Approx. 1400 gram / 3 lbs.
Clinical use



Product Code: BLM4

4 per package

BioLoc PEEK Insert, Soft Retention,
Approx. 700 gram / 1.5 lbs.
Clinical use



Product Code: BLS4

4 per package

BioLoc PEEK Insert, High Retention,
Approx. 2300 gram / 5 lbs.
Clinical use



Product Code: BLH4

4 per package



BioBall™ PEEK Attachments

BioBall Set

Includes; Metal housing (with L BioBall PEEK insert),
Protective disc, M BioBall PEEK insert



Product Code: BBSET

Medical Grade PEEK
Compatible with Ø 2.5 mm Ball Abutment of all implant brands.

BioBall PEEK Insert,
For Lab processing and
chair-side denture pick-up



Product Code: BBL4

4 per package

BioBall PEEK Insert, Medium Retention,
Approx. 1000 gram / 2.2 lbs.
Clinical use



Product Code: BBM4

4 per package

BioBall PEEK Insert, Soft Retention,
Approx. 600 gram / 1.3 lbs.
Clinical use



Product Code: BBS4

4 per package

BioBall PEEK Insert, High Retention,
Approx. 1400 gram / 3 lbs.
Clinical use



Product Code: BBH4

4 per package



BioMatrix™

Overdenture Solutions

bioinfinityimplants.com



Manufacturer:

avrupa
i m p l a n t

Avrupa Implant

Ikitelli OSB HESKOP

M5 Blok No:82 34490

Basaksehir / Istanbul - TURKEY

Phone : +90 212 670 13 00 (pbx)

Fax : +90 212 670 13 10

info@bioinfinityimplants.com

Rev. No: BMBENG-R001

